

425 Bloor Street East, Suite 201  
Toronto, ON M4W 3R4  
Tel: 416 921-7453 • Fax: 416 921-0117  
Toll Free: 1 866 383-5446  
[www.torontocentralhin.on.ca](http://www.torontocentralhin.on.ca)

## **NOTICE OF MEETING**

**The Meeting of the Board of Directors of  
Toronto Central Local Health Integration Network will be held on**

**Wednesday, February 24, 2016**

**4:00 - 7:00 p.m.**

**in the Boardroom, Toronto Central LHIN,  
425 Bloor Street East, Suite 301, Toronto**

**Note Location:**

**3<sup>rd</sup> Floor, Toronto Room**

**(Location as per map below)**

**Agenda will include the following:**

**CEO Report**

**Presentation – Patient’s First Discussion Paper**

**TC LHIN Strategic Plan Update**

**Primary Care – Draft Work Plan**

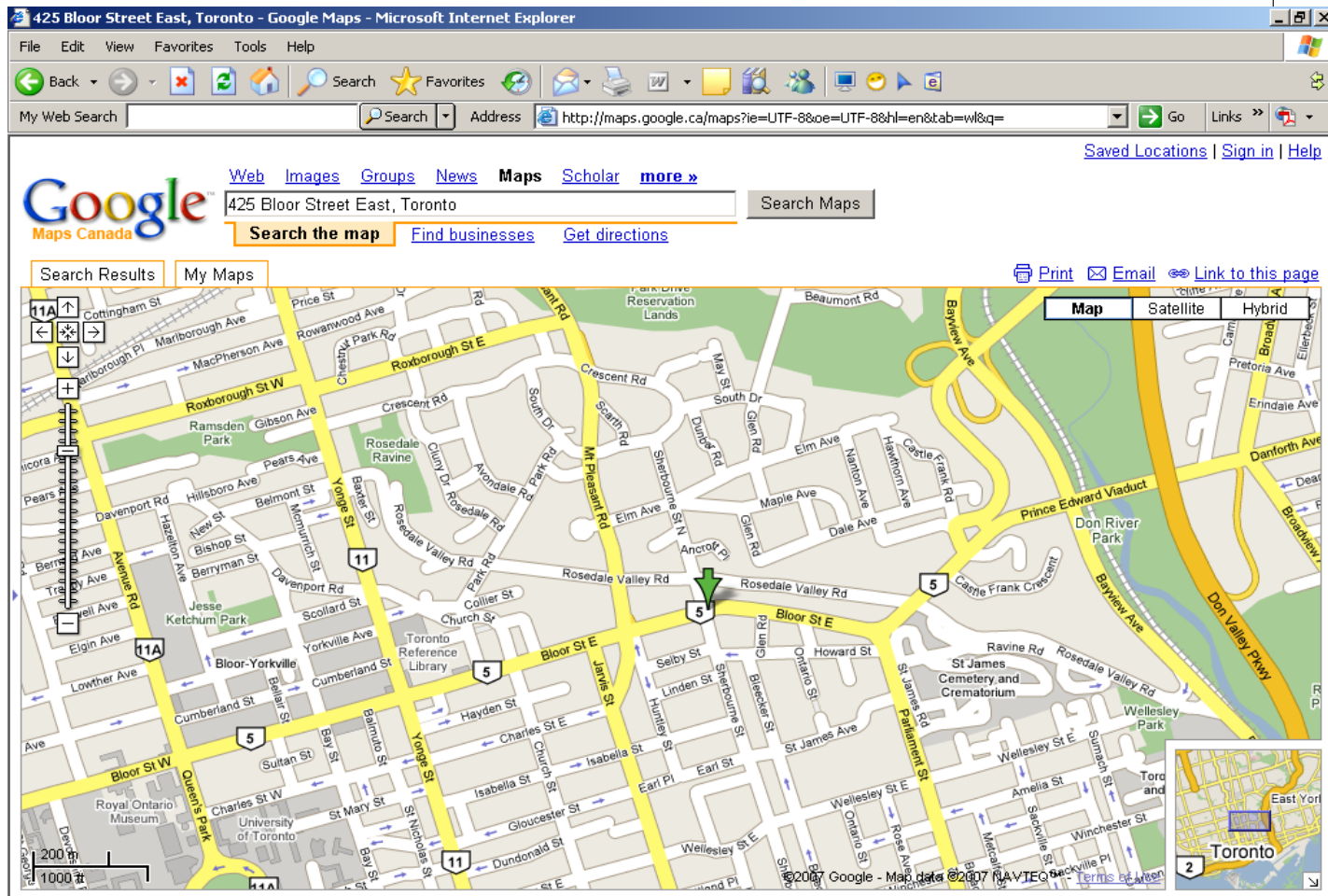
**Finance and Audit Committee Report**

**Sub-LHIN Population Planning**

**Citizen’s Panel/Patient Engagement**

# Toronto Central LHIN

The Toronto Central LHIN offices are located above the Sherbourne subway station.



Light refreshments will be provided